



**Sonoma
Water**

**State Water Resources Control Board
Temporary Urgency Change Orders (10/31/2024)
Russian River Hydrologic & Water Quality Report
December 6, 2024 - December 12, 2024**

Prepared as a requirement of the Orders approving Sonoma Water's Petition for Temporary Urgency Change in Permits 12947A, 12949, 12950, and 16596 (Applications 12919A, 15736, 15737, and 19351).

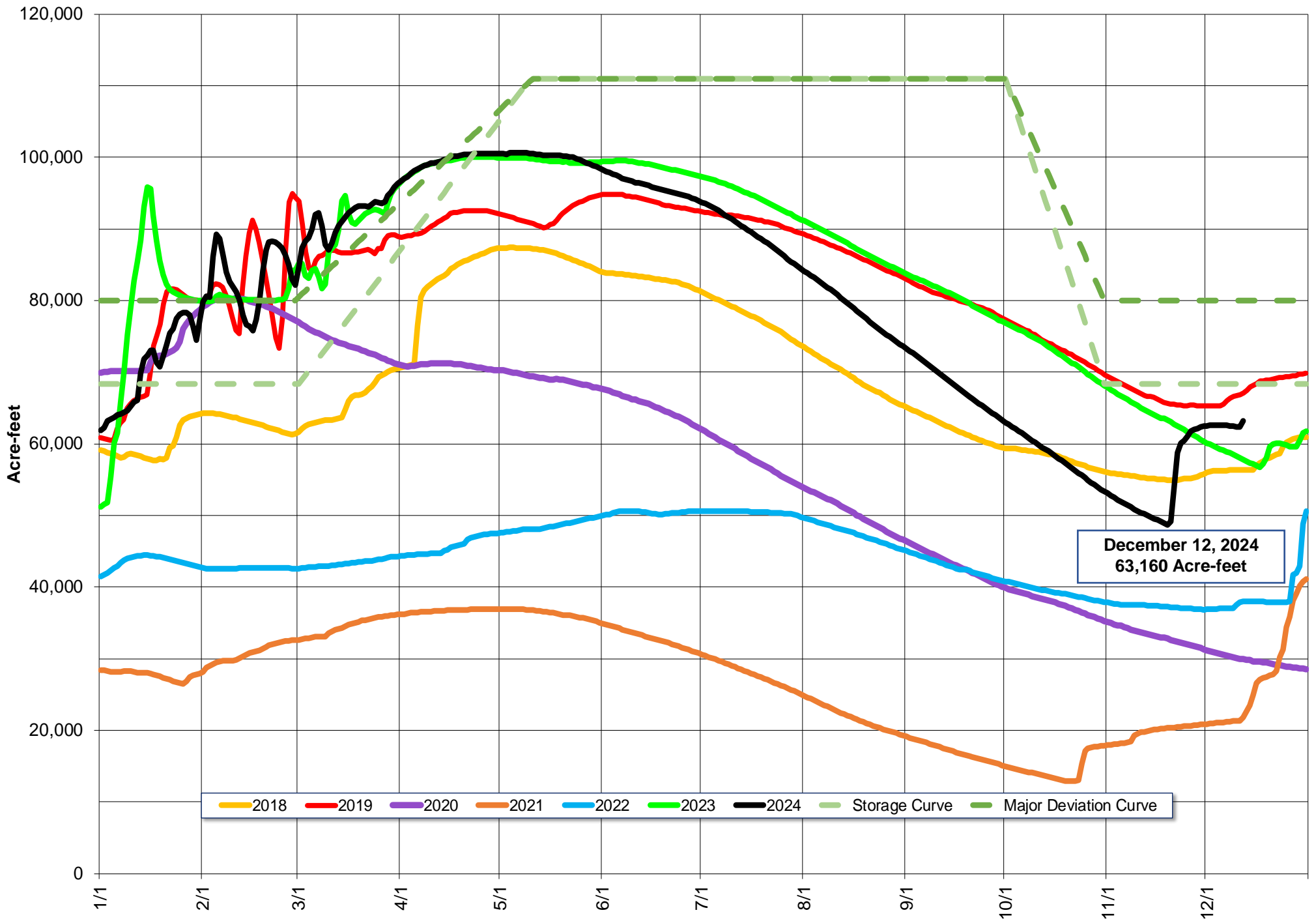
Instream Flow Requirements as of December 12, 2024

Basis	Reach	Instantaneous (cfs)	5-day Average (cfs)
Modified Per Order: Normal Condition	Upper Russian River	150	-
Modified Per Order: Normal Condition	Dry Creek	105	-
Modified Per Order: Normal Condition	Lower Russian River	125	-

Upper and Lower Russian River are based on criteria as established in the Order issued 10/31/2024.

Lake Mendocino

Lake Mendocino Storage 2018 - 2024 and Storage Curve



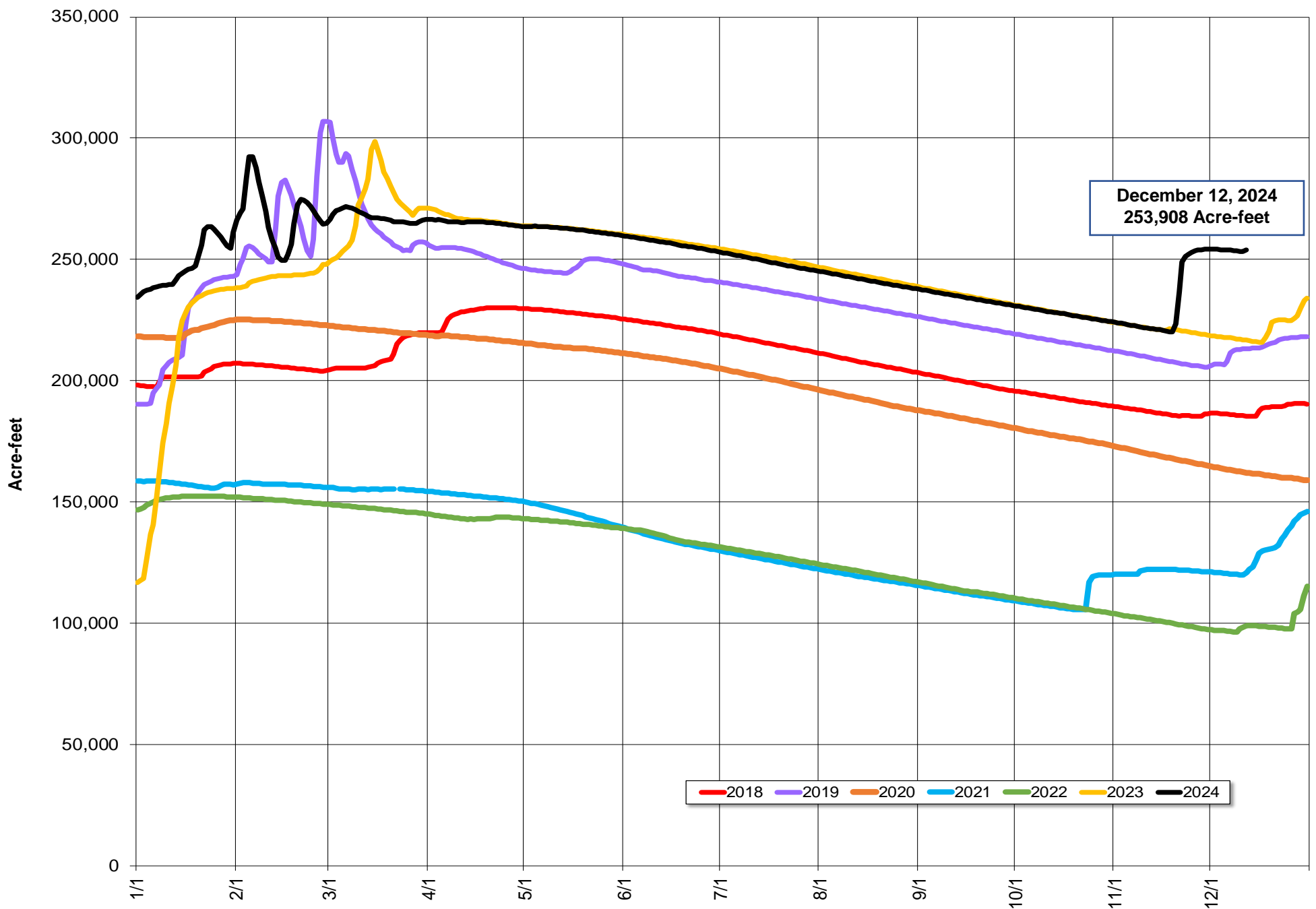
Storage (acre-feet)	December 12, 2024	63,160	
Change in Storage (acre-feet)	Last 30 days	12,985	433
	Last 7 days	568	81
Daily Inflow (cfs)	Last 7 days	Min	56
		Max	497
		Mean	133
Release (cfs)	Last 7 days	Min	79
		Max	95
		Mean	89

Lake Sonoma



Todd Schram, February 10, 2024

Lake Sonoma Storage 2018-2024



Storage (acre-feet)	December 12, 2024	253,908	
Change in Storage (acre-feet)	Last 30 days	32,414	1,080
	Last 7 days	27	4
Daily Inflow (cfs)	Last 7 days	Min	28
		Max	353
		Mean	104
Release (cfs)	Last 7 days	Min	105
		Max	106
		Mean	106

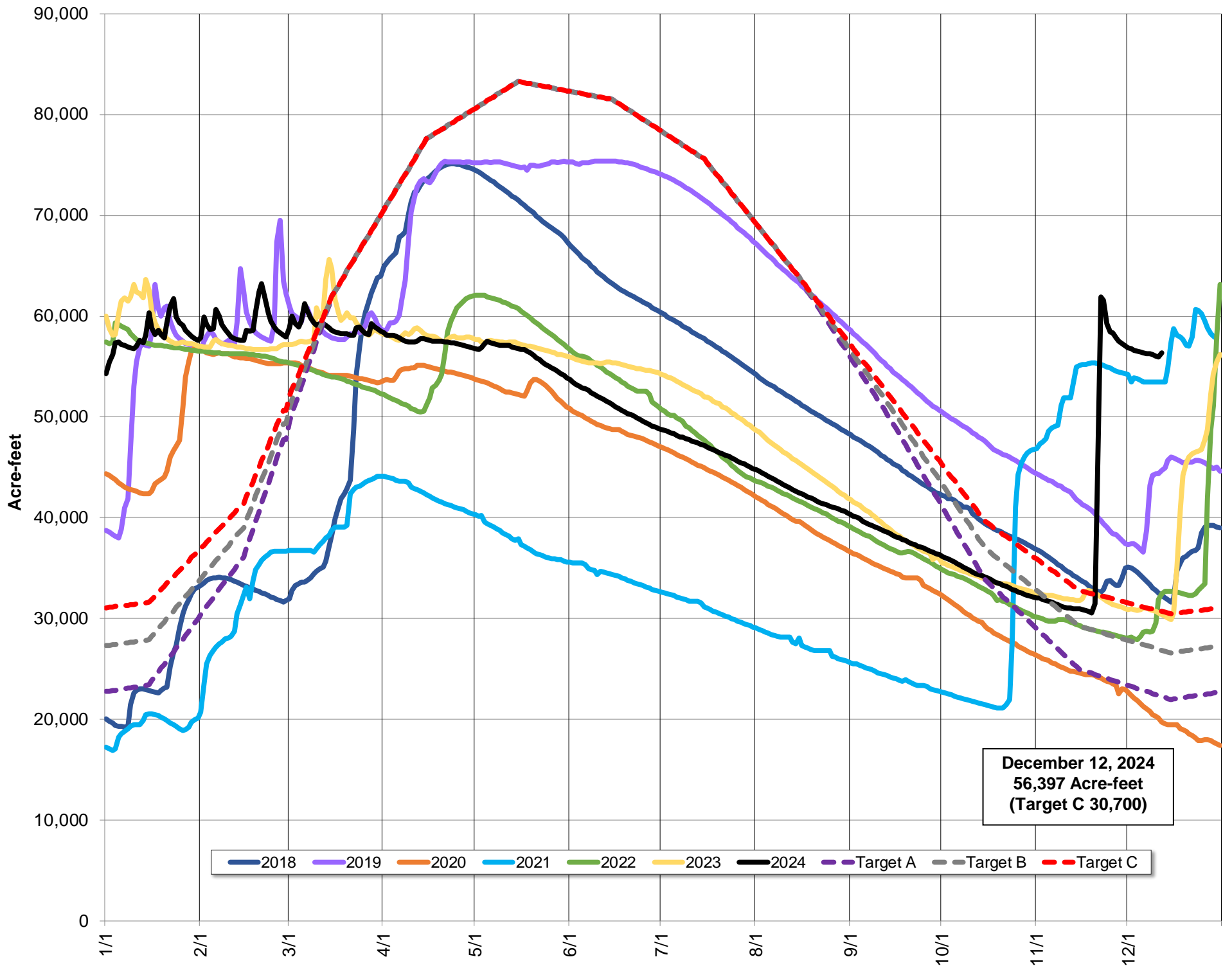
Potter Valley Project

PVP Diversion (cfs)	December 12, 2024	46
---------------------	-------------------	----

Parameter	Date Range	Cumulative	Daily Average
Inflow* (acre-feet)	October 1, 2024 - December 12, 2024	77,933	1,068
	Last 7 days	2,949	421

*Inflow calculation based on criteria established in D1610

Lake Pillsbury Storage 2018 - 2024 and Target Storage Scenarios



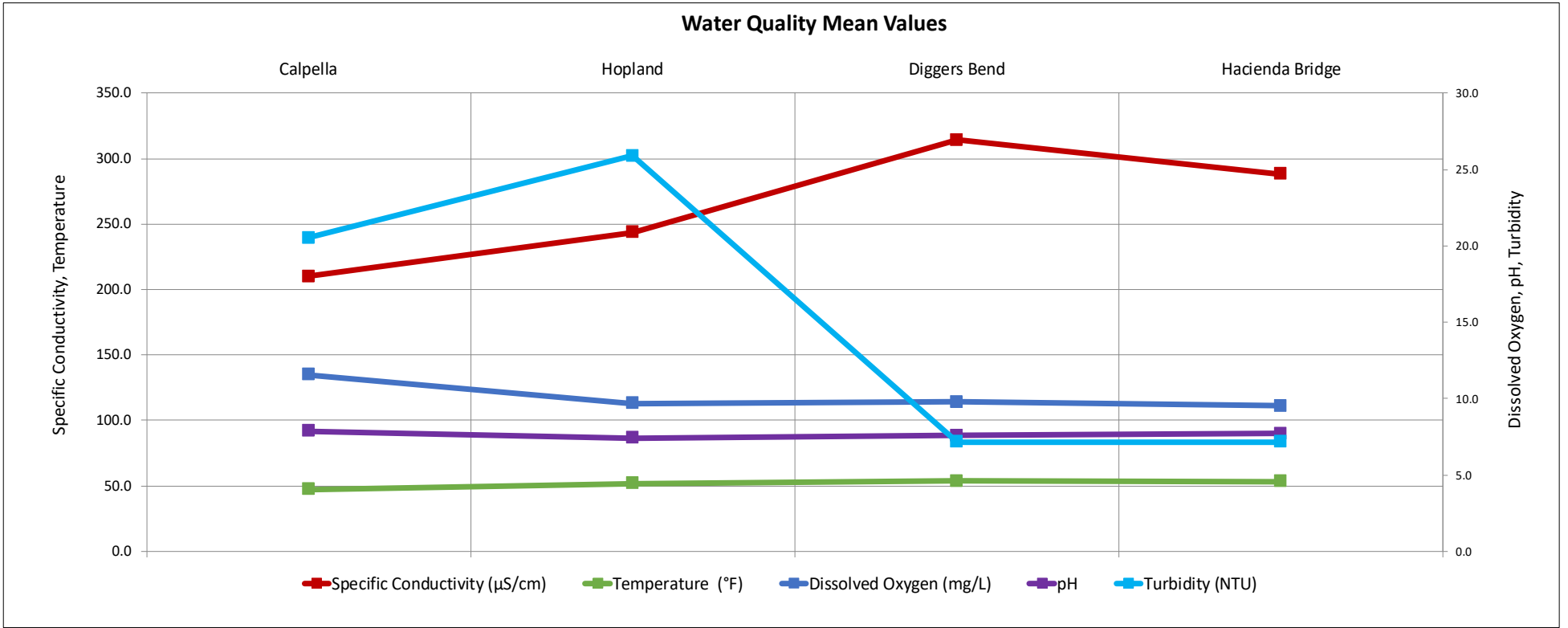
December 12, 2024
56,397 Acre-feet
(Target C 30,700)

Russian River Flows (December 6, 2024 - December 12, 2024)

Parameter		Calpella	Hopland	Cloverdale*	Jimtown*	Diggers Bend	River Diversion System at Mirabel*	Hacienda Bridge	Johnsons Beach*
		USGS 11461500	USGS 11462500	USGS 11463000	USGS 11463682	USGS 11463980	SCWA	USGS 11467000	SCWA
Temperature (°F)	Min	43.9	48.9		51.3	50.9		50.9	
	Max	50.0	53.8		56.3	55.8		55.0	
	Mean	47.2	51.8		54.0	53.7		53.4	
Specific Conductivity (µS/cm)	Min	148.0	137.0			285.0		250.0	
	Max	217.0	252.0			319.0		293.0	
	Mean	210.1	243.7			314.4		288.0	
Dissolved Oxygen (mg/L)	Min	11.1	9.4			9.4		9.1	
	Max	12.2	10.6			10.3		10.0	
	Mean	11.6	9.7			9.8		9.5	
Dissolved Oxygen (% Saturation)	Min	97.0	86.0			87.8		85.2	
	Max	101.1	93.2			94.0		91.1	
	Mean	98.7	87.6			90.7		88.0	
pH	Min	7.6	7.4			7.5		7.6	
	Max	7.9	7.5			7.6		7.8	
	Mean	7.9	7.4			7.6		7.7	
Turbidity (NTU)	Min	10.3	14.4			3.0		5.1	
	Max	255.0	202.0			49.0		21.2	
	Mean	20.5	25.9			7.2		7.2	

*Station operated seasonally

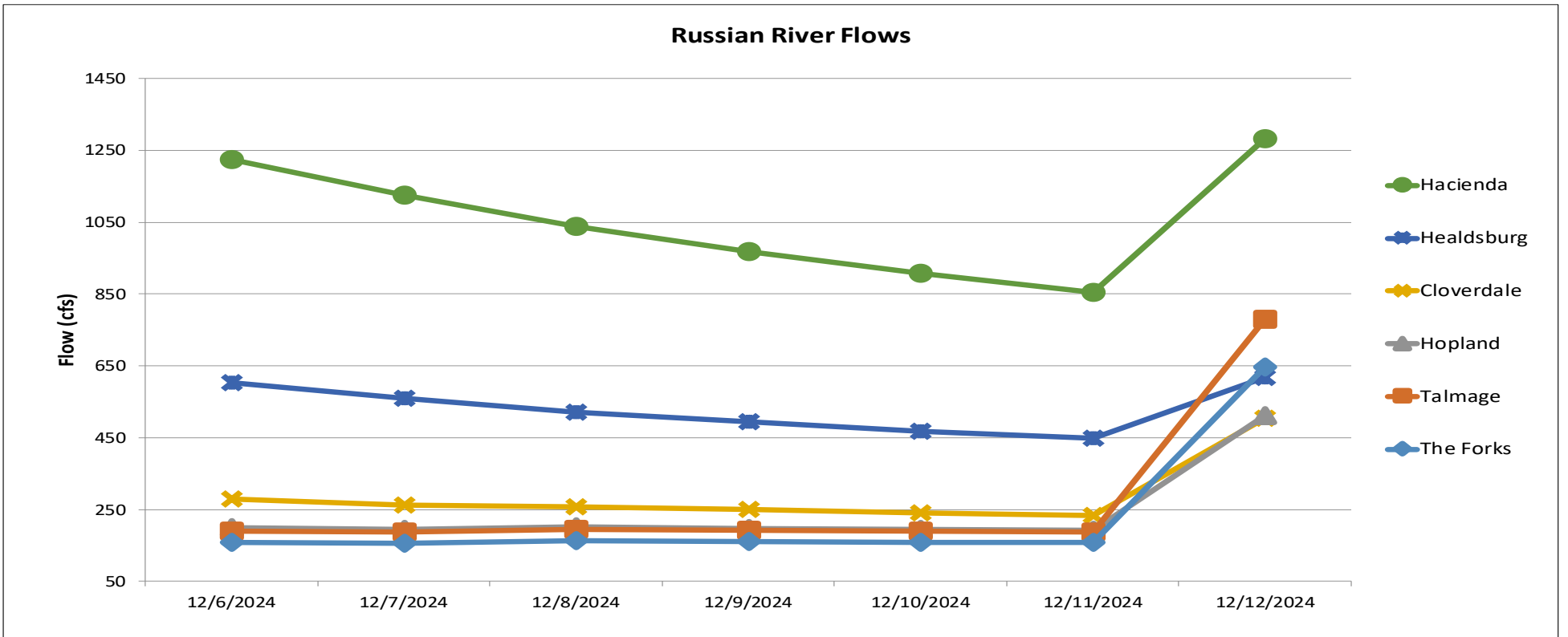
Water Quality Mean Values



Gage	24-hr Average Flow (cfs)						
	Dec 6, 2024	Dec 7, 2024	Dec 8, 2024	Dec 9, 2024	Dec 10, 2024	Dec 11, 2024	Dec 12, 2024
The Forks*	157	156	162	160	159	159	647
Talmage USGS 11462080	189	187	195	192	190	188	779
Hopland USGS 11462500	200	195	201	198	194	192	510
Cloverdale USGS 11463000	279	263	257	250	241	233	503
Healdsburg USGS 11464000	603	559	521	494	468	448	618
Hacienda USGS 11467000	1224	1126	1037	969	909	854	1282

*West Fork(USGS 11461000) + East Fork (Coyote Valley Dam Release)

Russian River Flows

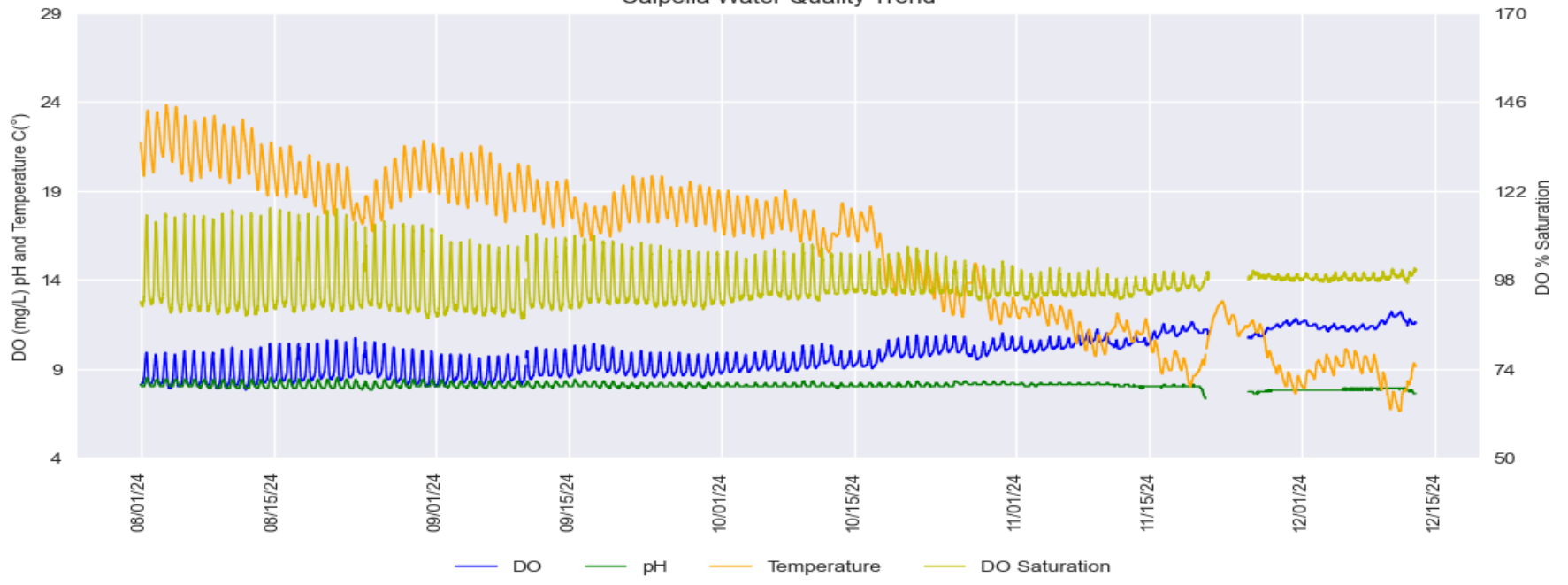


Russian River Water Quality August 1, 2024 – December 12, 2024

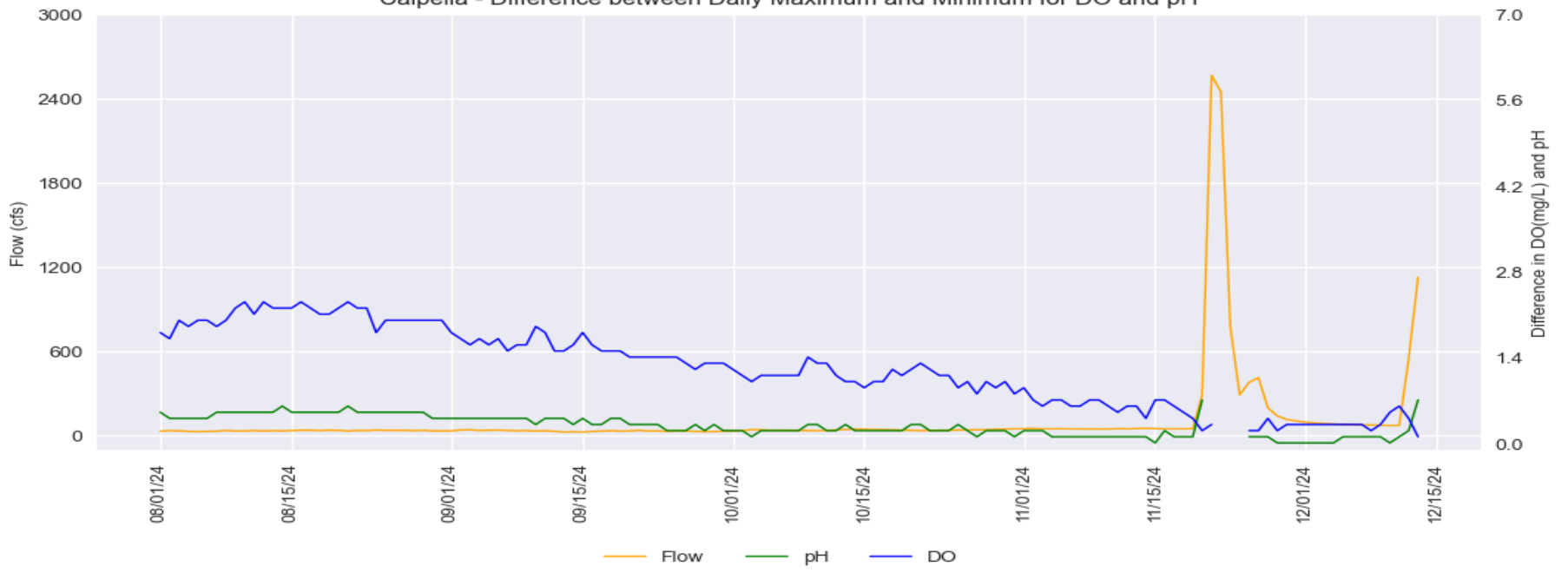
Provisional Data Subject to Revision

Calpella

Calpella Water Quality Trend

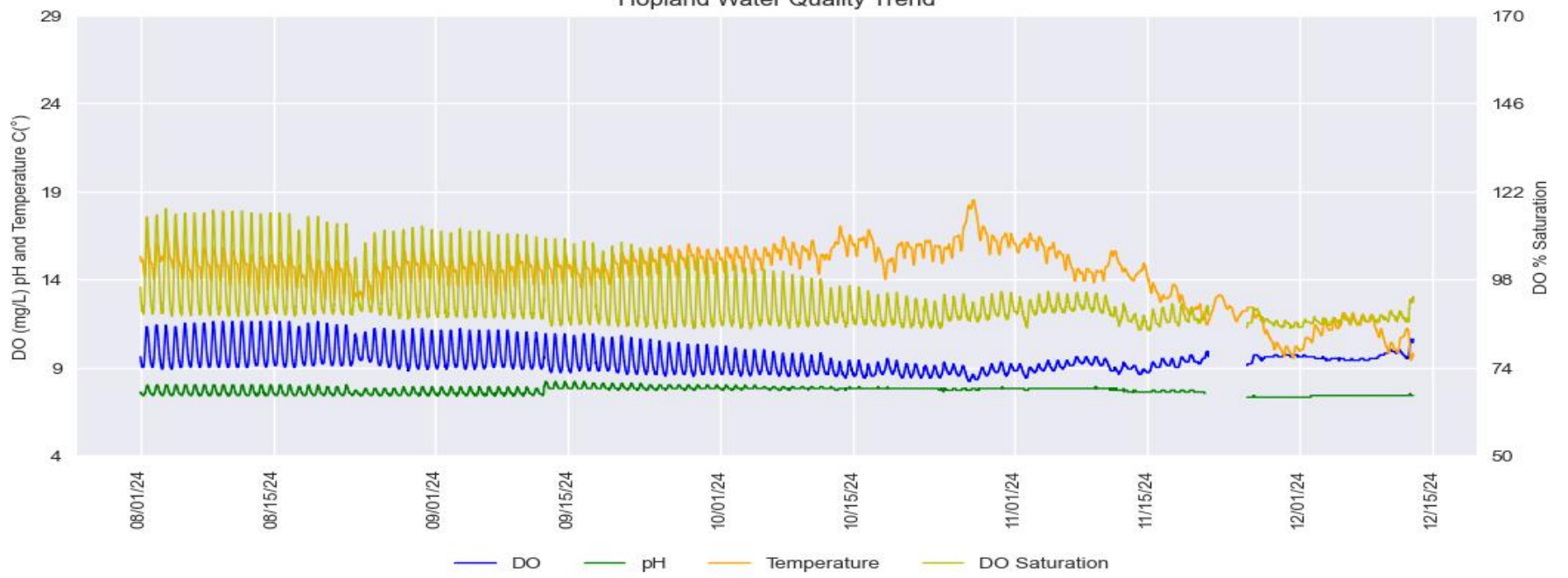


Calpella - Difference between Daily Maximum and Minimum for DO and pH

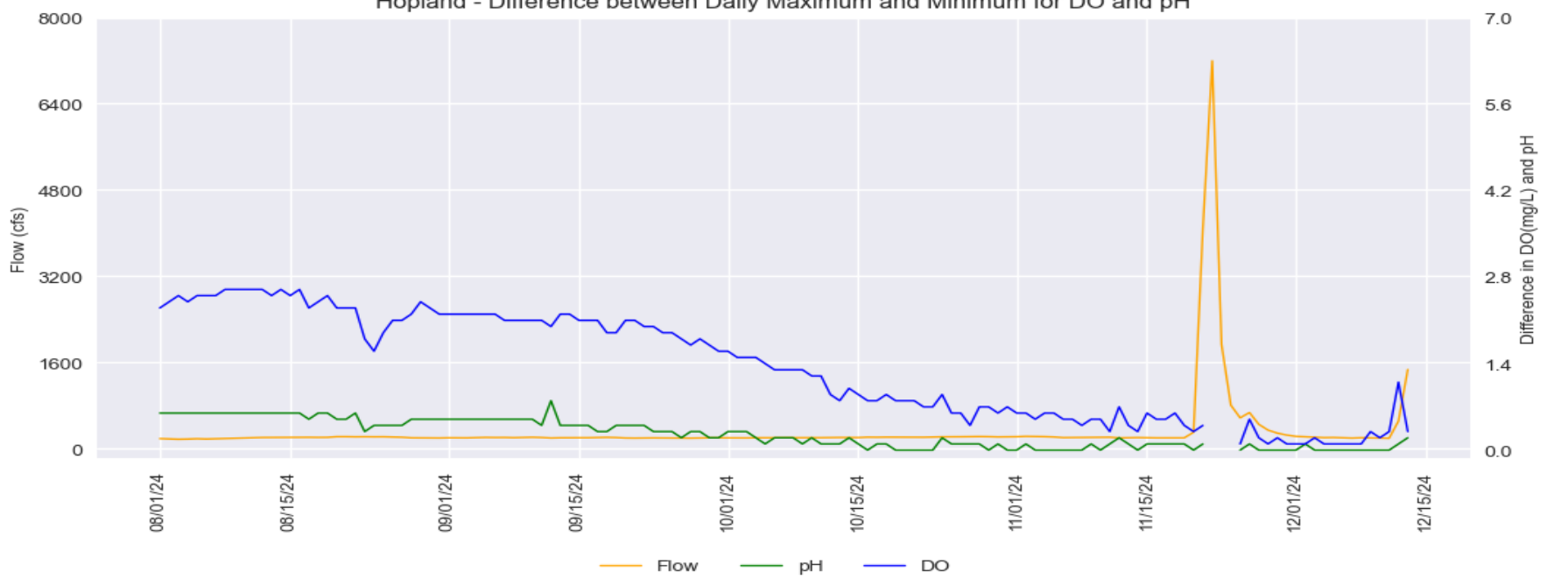


Hopland

Hopland Water Quality Trend



Hopland - Difference between Daily Maximum and Minimum for DO and pH

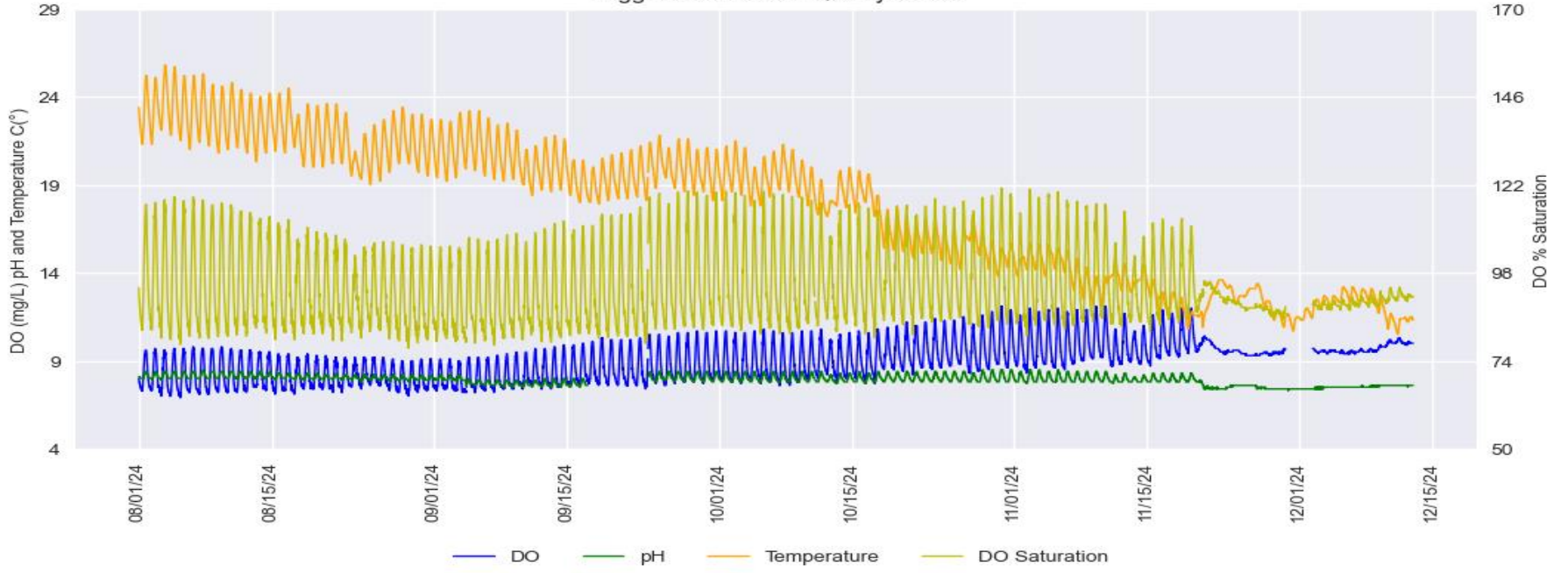


Russian River Water Quality August 1, 2024 – December 12, 2024

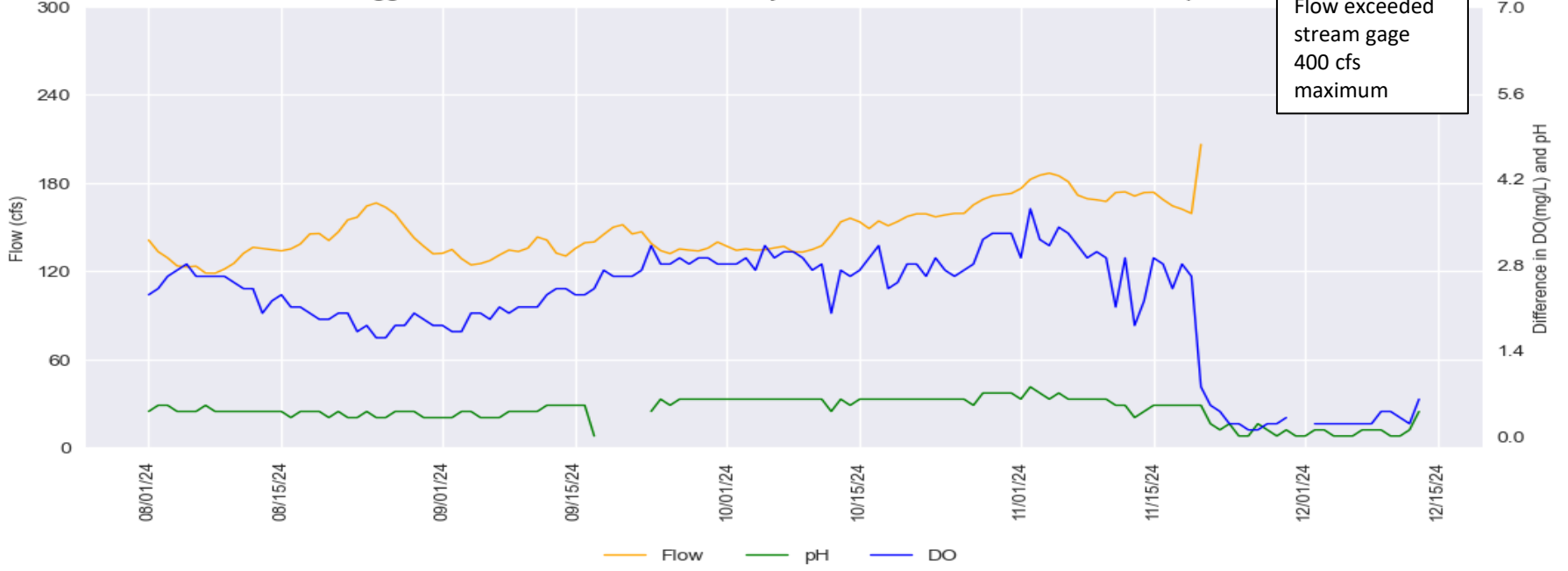
Provisional Data Subject to Revision

Digger Bend

Digger Bend Water Quality Trend

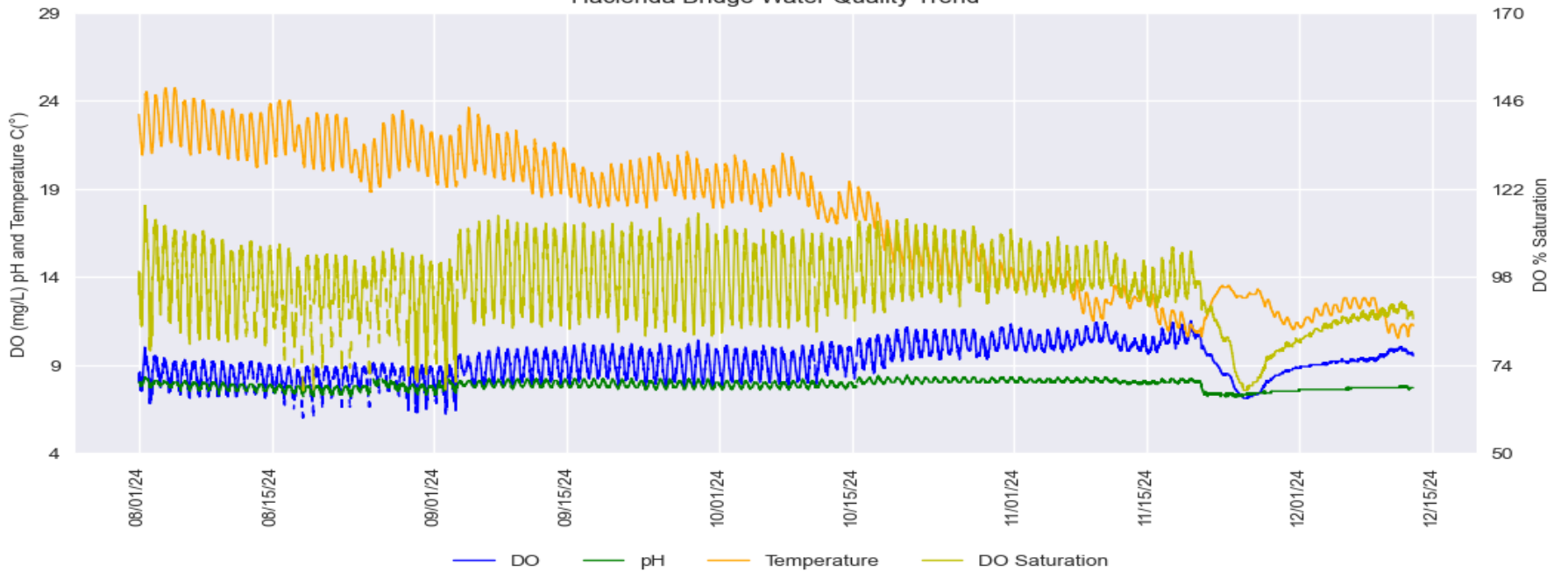


Digger Bend - Difference between Daily Maximum and Minimum for DO and pH

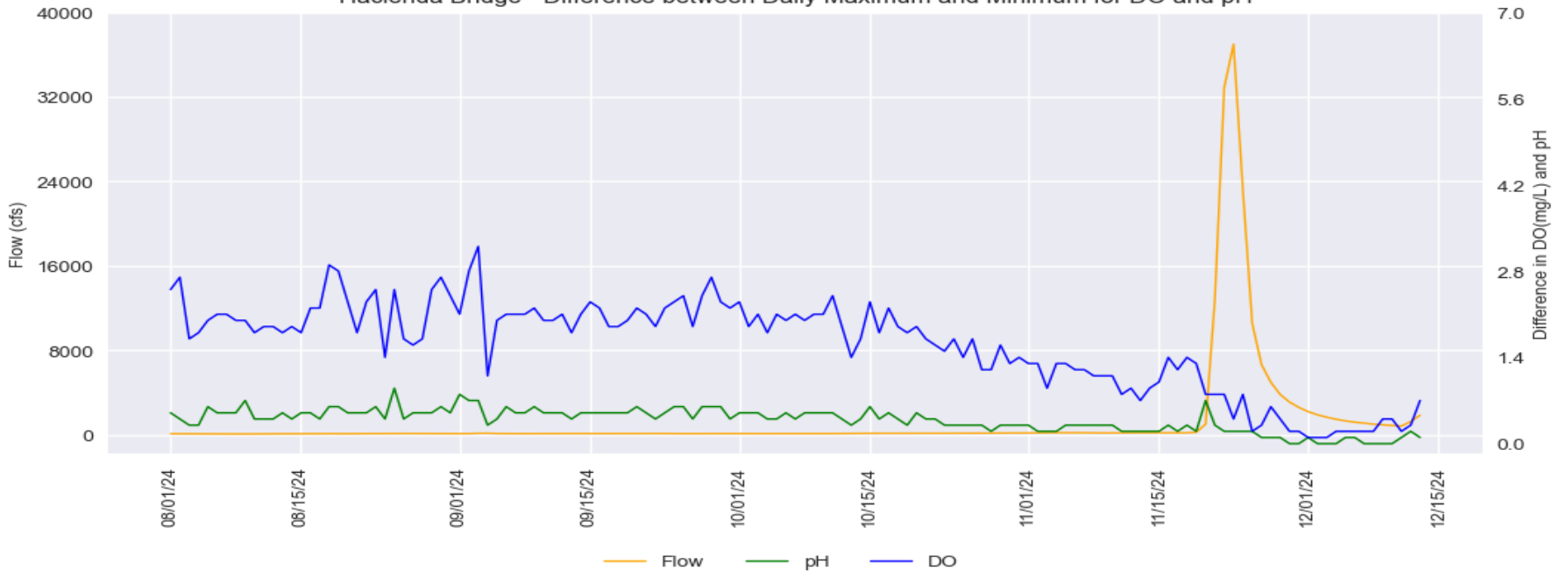


Hacienda Bridge

Hacienda Bridge Water Quality Trend



Hacienda Bridge - Difference between Daily Maximum and Minimum for DO and pH

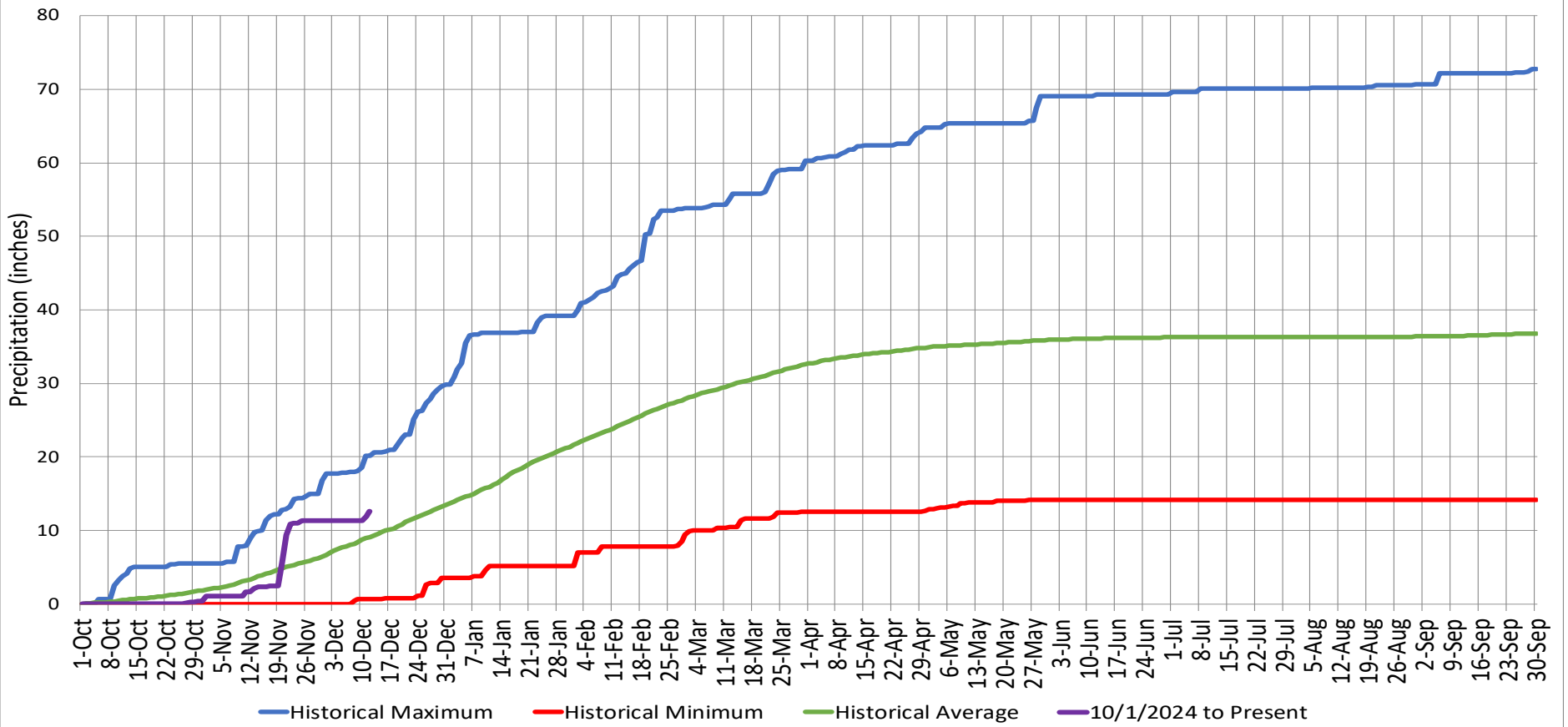


Precipitation

Ukiah Municipal Airport (WBAN: 72590523275 (KUKI))

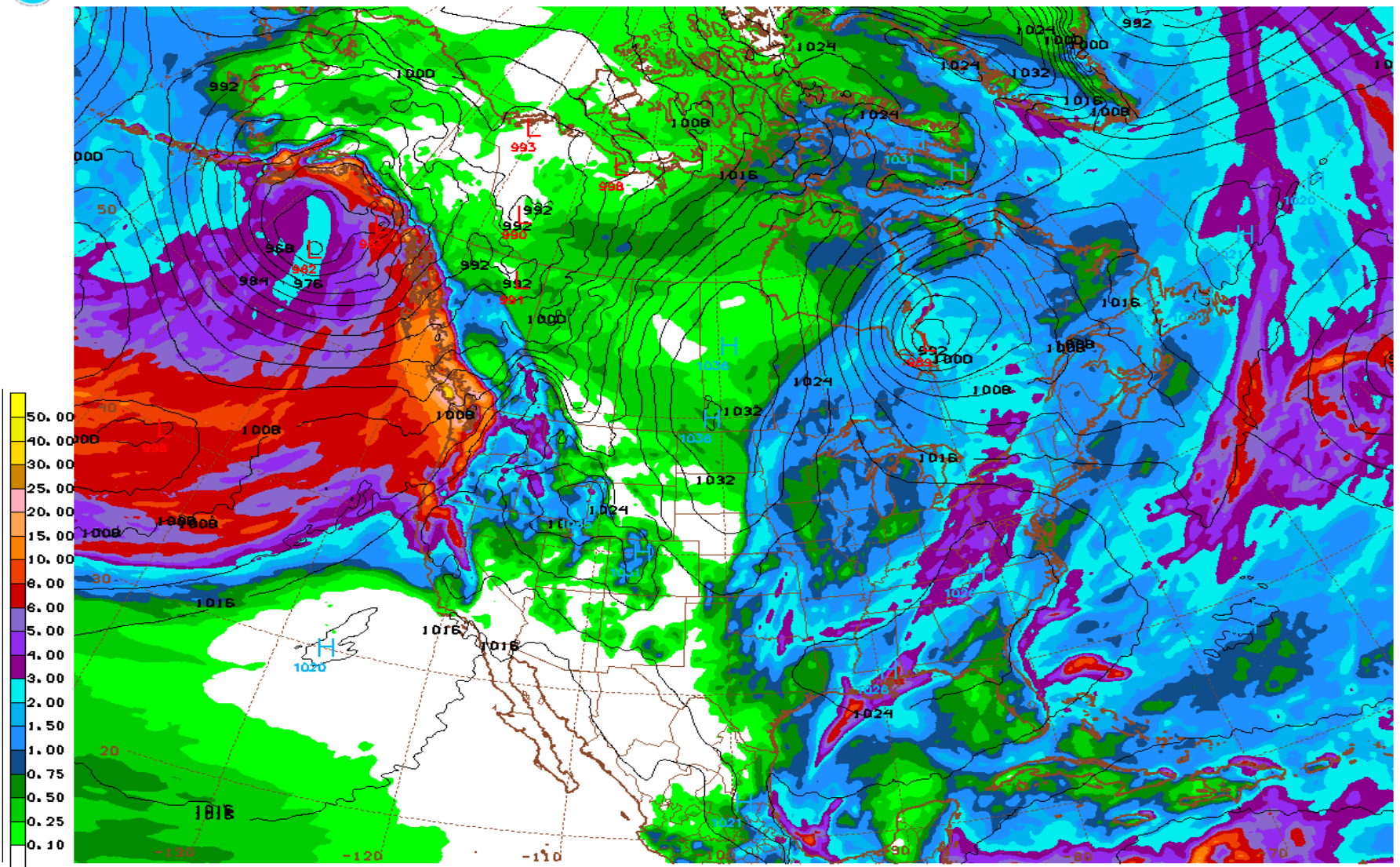
Date Range	Cumulative (inches)
Oct 1, 2024 - Dec 12, 2024	12.65
Last 7 Days*	1.26

Cumulative Precipitation Comparison of Current Year versus Historic Record



Global Forecast System Model 16-day Cumulative Precipitation Forecast

6FS 12/16/24 12UTC 384HR FCST VALID MED 01/01/25 12UTC NOAA/NWS/NCEP



6FS MED 250101/1200V384 EMSL (4MB), 384HR ACCUMULATED PRECIP (IN)

Date Range
Dec 16 - Jan 1, 2025

Forecasted Cumulative (inches)
4.96

Russian River Fisheries Monitoring



Sonoma Water operates a video camera at the Mirabel Inflatable dam to count the number of adult salmonids returning to the Russian River. Due to an impending storm the dam was deflated on November 19, 2024, and the video equipment was removed for the season. Sonoma Water has completed reviewing the data collected during the 2024 season and the preliminary count is 1,512 adult Chinook. The 2024 count is less than the long-term average of 2,610 Chinook, but the camera was removed earlier in the year than typical, and it is likely that many adult Chinook have returned since removing the camera.